

How to travel to Bochum

May 9, 2025

Contents

1	Taking the SkyTrain to “Airport Station (Flughafen Bahnhof)”	2
2	Trains to Bochum	2
A	Purchasing tickets	3
A.1	Purchasing a Sky Train ticket	5
A.2	Purchasing a ticket to Bochum from the ticket machine	5
A.3	Downloading and creating an account on the VRR app	6
A.4	Purchasing an Eezy ticket with the VRR app	7
A.5	Purchasing a single ”C” ticket with the VRR app	9

The simplest and most reliable way to travel to Bochum from abroad is to fly into either Düsseldorf International Airport (DUS) or Dortmund Airport (mainly budget airlines). Below is a description of how to travel, using public transport, from DUS to Bochum Hbf (Hauptbahnhof = main/central station)

1 Taking the SkyTrain to “Airport Station (Flughafen Bahnhof)”

After picking up your luggage exit the baggage claim hall (Fig. 1) and follow the signs to the SkyTrain (Fig. 2). The SkyTrain is accessible by escalators and elevators and the platform is two stories above the arrival hall. Unlike in most other international airports, the SkyTrain is not free. You will need a valid ticket to ride the SkyTrain. The fine for not having a ticket is currently 60 Euro. If you need information on buying a ticket see Appendix A. Depending on the time of the day the SkyTrain leaves every 3, 5 or 7 minutes. Catch the train in the direction of the Airport Station and alight at the last stop “Airport station”.

2 Trains to Bochum

There are several types of trains that travel directly to Bochum. We strongly advise you to take a direct train. You can find the latest information regarding the train departure times and platform numbers in either the VRR App/website or DB App/website .

- **S-Bahn:** Slow train. Stops at every stop. Takes about an hour.

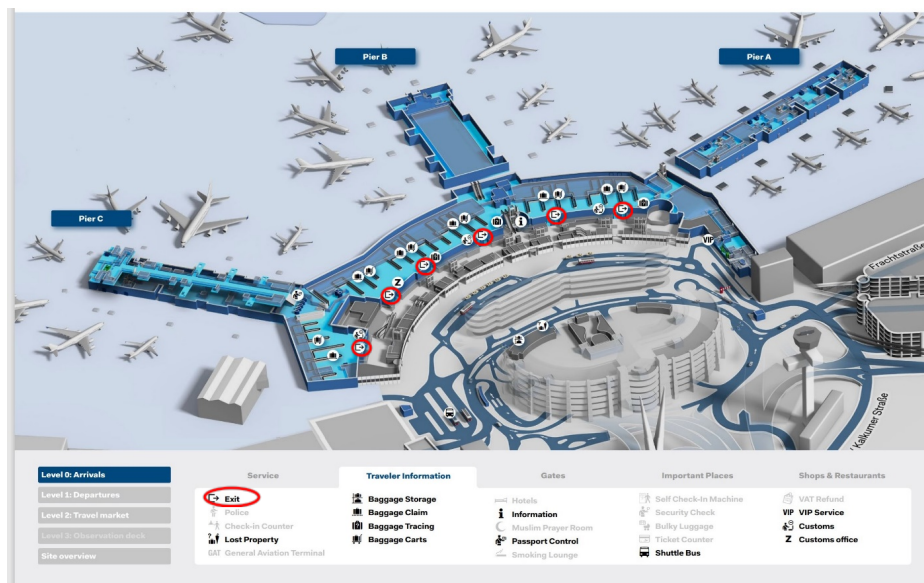


Figure 1: Plan of arrivals area at Düsseldorf International Airport (DUS). The baggage claim area is cyan, while the exits to the arrivals hall are marked in red



Figure 2: Sign to the SkyTrain found in the arrivals hall at Düsseldorf International Airport (DUS)

- **RE:** Regional Express. RE1, RE6 and RE11. Takes about 35-40 minutes. (BEST OPTION)
- **ICE:** Intercity Express. Takes about 35-40 minutes.
- **IC:** Intercity. Takes about 35-40 minutes.

NOTE:

1. The Deutsche Bahn is notoriously late. We advise you to download an app so you can monitor the departure times and the platform numbers (see links above).
2. The RE has priority on the track over the S-Bahn so in most cases it is better to wait for a RE.
3. ICE and IC trains take the same time to get to Bochum as the RE. Due to the high population density in the area they are not allowed to travel at their maximum speed.
4. An ICE/IC ticket can only be used on trains other than those on the ticket if it specifically says so or if the train's arrival at your destination is delayed by more than 20 minutes.
5. There are some other trains that stop at both stations. They require separate tickets which you can purchase on the providers website or through their apps.

A Purchasing tickets

Purchasing tickets is the single most confusing part of using public transport in this area. The fine for free riding is currently 60 Euro. Not speaking the language or making a mistake is not considered an excuse.

Please refer to our flow chart before you leave home. This way you will be well prepared. The flowchart aims to help you navigate the ticketing system and get safely to Bochum Hbf. Although we have done our best to cover all scenarios, it is possible that your particular situation is not covered on our chart.

Important: It is not enough to have a ticket, you must also make sure it is validated.

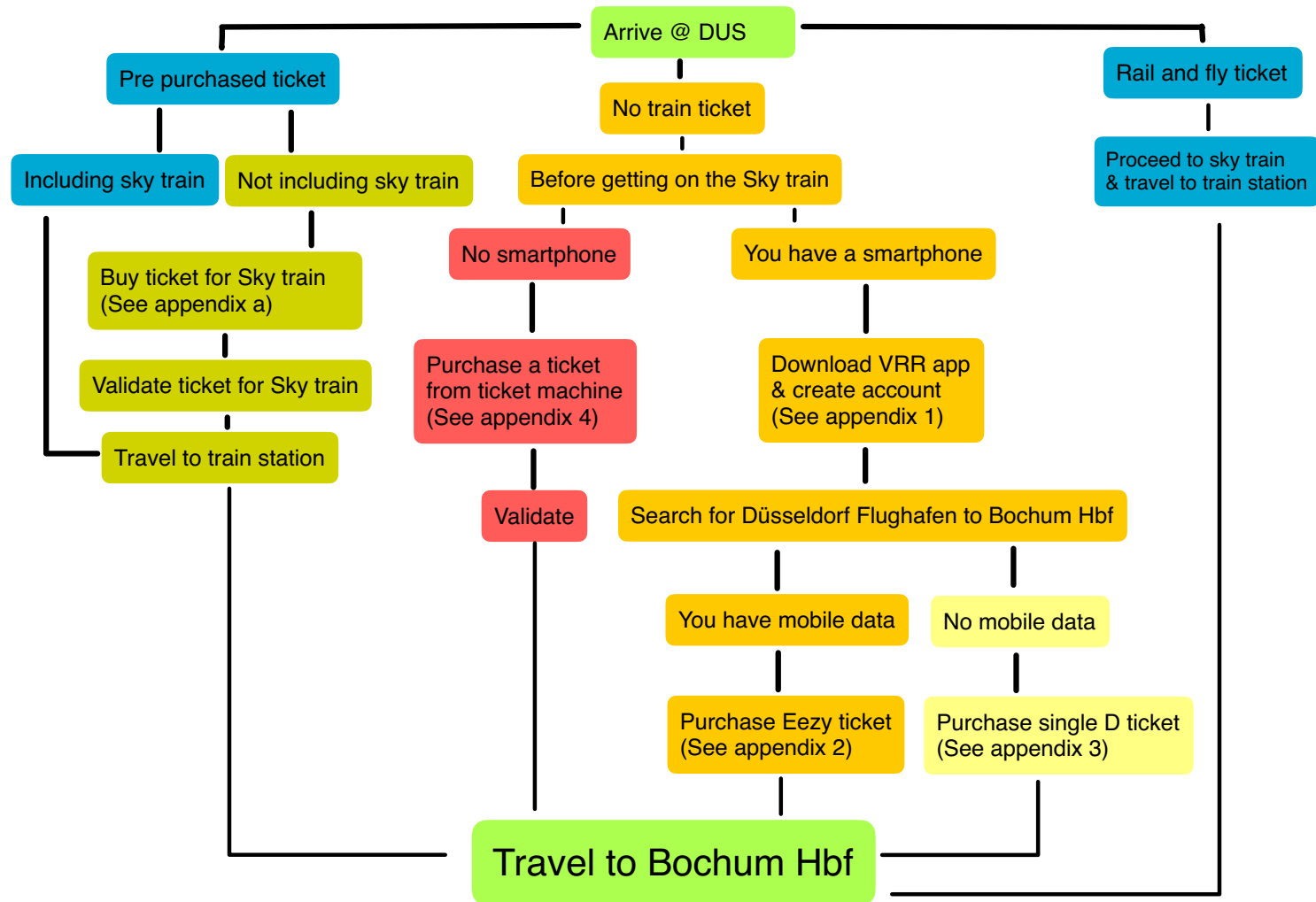


Figure 3: Ticket purchasing flow chart

A.1 Purchasing a Sky Train ticket

You can buy a ticket for the Sky Train from a ticket machine on the Sky Train platform (Fig. 4a). The machine should accept credit cards and cash. If it is out of order you are advised to take a photograph of the screen so you can prove to a ticket collector that it was indeed out of order.

- Change the language to one that you understand
- Find the ticket "A" (This may be on the start screen. If not look under "Gesamtangebot Nahverkehr" or "additional Tickets". It will depend on the software that the machine is running.) Current price (07.05.25) is 3.60 Euro.
- The machine generally takes cash, notes up to 20 EUR in denomination, and credit cards.
- Validate your ticket (Fig. 4b)

A.2 Purchasing a ticket to Bochum from the ticket machine

If you buy a ticket from a ticket machine, change the language settings first. The modern ticket machines have a small bar at the bottom of the screen where you can select English and possibly your native language (Fig. 5). Older machines have a language icon at the bottom right corner of the screen.

Newer machines offer you the option to enter your destination (Bochum Hbf or Bochum Central Station). The machine will then suggest the correct ticket for your journey, in this case tariff "C". For older ticket machines at the bottom left of the screen you see a green box labelled "B C". Select this. Then you must select a single adult "C" ticket (Einzelticket Erw.). When we last checked it cost 18.90 EUR. Using this ticket you can take any Regional Express (RE), S-Bahn, subway, bus, tram between the airport and your destination in Bochum.

The machine generally takes cash, notes up to 20 EUR in denomination, and credit cards (newer machines may have contactless pay function, but for older ones you may need a physical card). Once you have the physical ticket you must validate it by stamping it in one of the machines that are also on the platform (Fig. 4b). If you don't validate your ticket you will be fined for not having a ticket



(a) Two types of ticket machines.



(b) Validating machine. Look out for it on the platform. If you can't see it on the platform then it is in the train. They vary in colour.

Figure 4: Ticket and validating machines

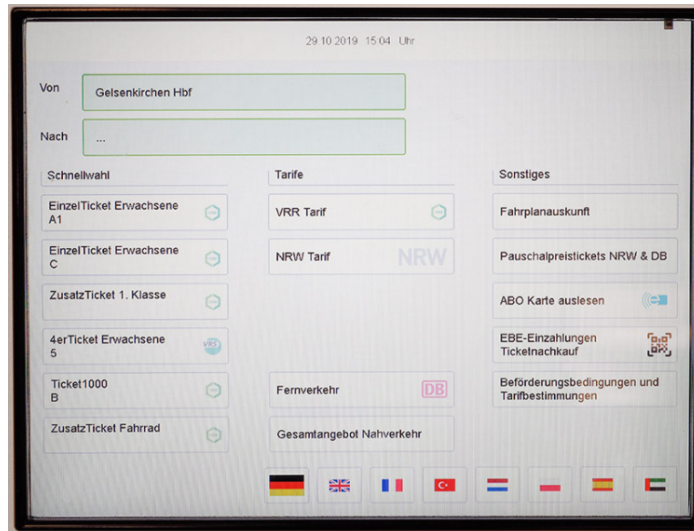


Figure 5: Start screen of a modern ticket machine.

(currently 60 EUR).

If for some reason the ticket machine does not work take a picture of it and then proceed to the Düsseldorf Airport Train Station and buy a ticket there either from the machines or from the ticket counter ¹.

To figure out which train to take please consult the large yellow bulletin at the DUS Airport Train Station. If it no longer exists (they are slowly getting rid of them) you can ask at the ticket counter or you will have to ask a fellow traveller to help you.

A.3 Downloading and creating an account on the VRR app

The VRR app is the best app to have for your stay at the RUB. You can use it to buy tickets on all regional trains, subways, buses, etc. in the area. <https://www.vrr.de/en/timetable-mobility/vrr-app/>

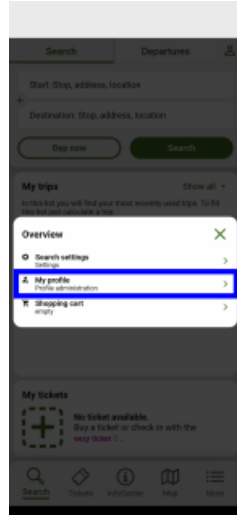
Once you have downloaded and installed the app you will need to create an account. We recommend that you do this before you start your journey, just in case you experience problems. To find the correct shop type in the zip code "Postleitzahl" 44801 and select VRR/DB.

Open the app and navigate to "register". Follow the instructions illustrated in figure (6).

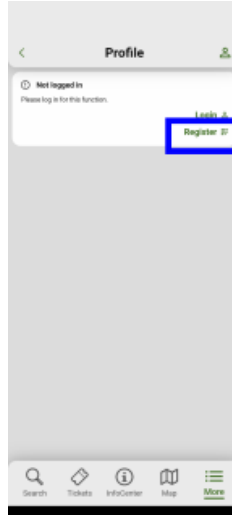
¹Opening hours: M-F 7 am - 9 pm; Sat. 8 am - 9 pm; Sun. & hols 9 am - 8pm



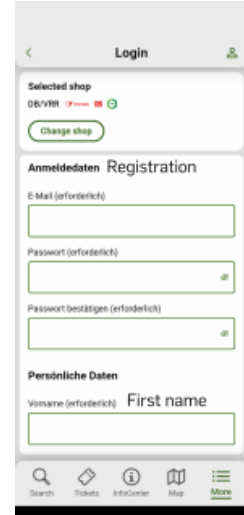
(a) Tap on the top right hand icon



(b) Tap on "my profile"



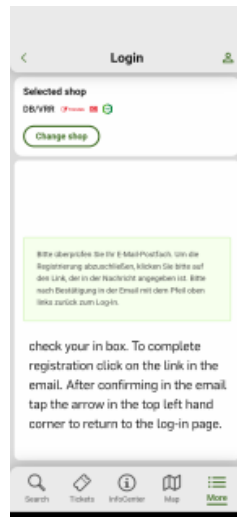
(c) Tap on "register". The registration mask is in German.



(d) Everything that is "erforderlich" is required.



(e) Click on "ein Konto registrieren" (register an account)



(f) Complete your registration by clicking on the link in your email



(g) Security questions: mothers maiden name; favourite animal; name of elementary school. Choose one and enter the answer into the next cell and click on "Zum nächsten Schritt".

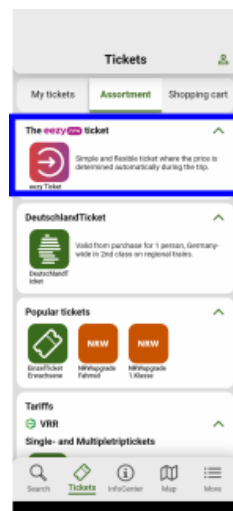
(h) Add a payment method to your account. Follow the normal procedures to add your card.

Figure 6: Registering for a VRR account

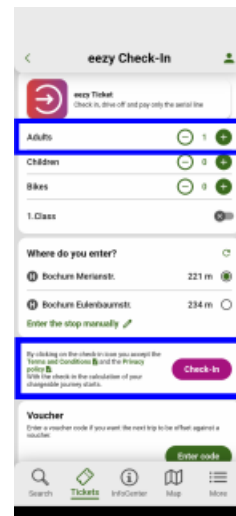
A.4 Purchasing an Eezy ticket with the VRR app

Important: To use this ticket you need to have mobile data active for the duration of your trip and you must be logged in to your account A.3. You do not need to validate this ticket. It will be valid

from the time of purchase. Once you reach your destination you must log out. You will be billed according to your travel. There is a maximum daily value and a max. monthly value. Once you have exceeded these values you will no longer be charged (although you have to activate and deactivate your ticket each time you travel).



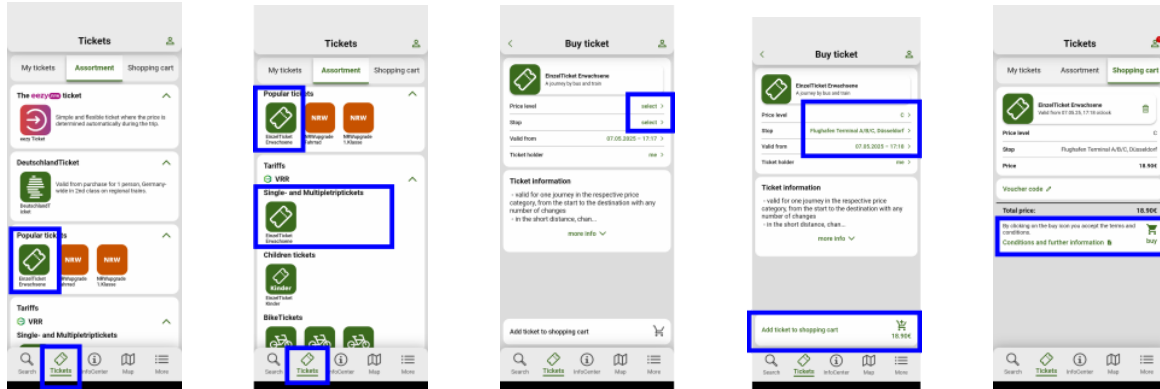
(a) VRR app start screen tap on “The eezy ticket”.



(b) Enter the number of tickets you need, choose your place of entry (or enter it manually) and tap ”Check-In”.

A.5 Purchasing a single "C" ticket with the VRR app

If you are unable to use your mobile data for the duration of your travel we suggest you buy a ticket through the VRR app. If you have not already made an account please see Appendix 6. The ticket you are about to purchase will be valid on RE and S trains together with all buses, trams, subways, etc. for a single journey. It will be valid from the time of purchase and currently costs 18.90 EUR.



(a) VRR app start screen click on "Tickets".

(b) Choose EinzelTicket Erwachsene (VRR) = single ticket adult

(c) Click on "select"

(d) Choose price level and the stop as shown in the figure. Make sure that the cell "Valid from" shows the date and time from which you want the ticket to be valid from. Add the ticket to your basket.

(e) Proceed to checkout.

Figure 8: Buying a single ticket